

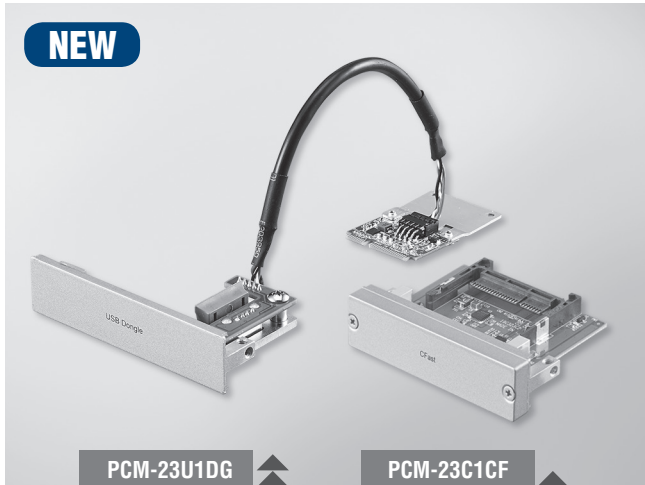
# PCM-23C1CF

# PCM-23U1DG

## 1 CFast Slot with Cover Protection

## USB Slot w/ Lock for USB Dongle, Half-size mPCIe

**NEW**



PCM-23U1DG

PCM-23C1CF



### Features

- Meets Advantech Standard iDoor Technology
- PCM-23C1CF includes single CFast II slot which utilizes existing internal HDD cable
- PCM-23C1CF includes a captive screw type cover for CFast card protection
- PCM-23U1DG includes locked USB connector preventing disk from falling out
- Supports Control DIN-Rail PC (UNO-1300/1400)
- Supports Embedded Automation PC (UNO-2300/2400 series)
- Supports Control Cabinet PC (UNO-3200/3400 series)
- Supports Embedded Automation PC (UNO-2200 series (PCM-23U1DG))
- Supports Control Cabinet PC (UNO-3300 series (PCM-23U1DG))
- Supports Control Panel Computers (TPC-xx81/xx82 series (PCM-23U1DG))
- Supports Thin Client Panel Computers (TPC-xx51 series (PCM-23U1DG))

### Introduction

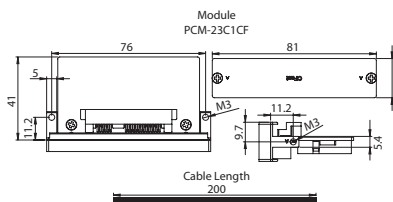
The PCM-23 series are storage modules from Advantech iDoor Technology. They are compatible with the PCI Express® Mini Card Specification Revision 1.2, including MRAM for automation machine memory back up which will no need battery, SATA to CFast on ThinClient terminal with storage for shorter maintenance and shorter MTB repair, Locked USB Dongle for Software protection in SCADA system, and TPM on Quality system management. This is a flexible design that enables customers to customize their features which meet iDoor Technology.

### PCM-23C1CF Specifications

#### General

- Dimensions** 19.4 x 81 x 41 mm
- Features** I/O plate to SATA connector
- Form Factor** I/O Plate
- Contents** I/O module, bracket
- Operating Temperature** 0 ~ 60°C (32 ~ 140°F)
- I/O Port** 1 slot with CFast Type II connector
- Color** Silver

### PCM-23C1CF Dimensions

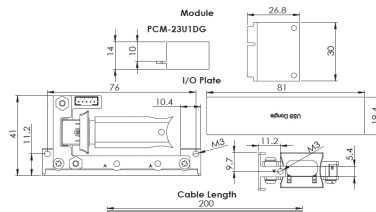


### PCM-23U1DG Specifications

#### General

- Dimensions** 19.4 x 81 x 41 mm (USB: L x W x H-max: 52 x 17 x 10)
- Features** USB A-type, utilizing system USB signal, +5V supported
- Contents** I/O module, cable, half-size mPCIe, Half/Full-size mPCIe adapter kit
- Operating Temperature** 0 ~ 60°C (32 ~ 140°F)
- I/O Port** 1 port internal USB 2.0
- Color** Silver

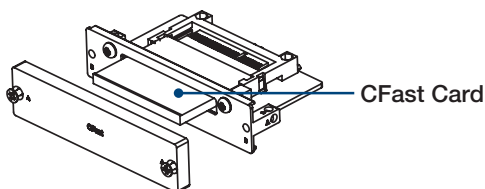
### PCM-23U1DG Dimensions



### Ordering Information

- PCM-23C1CF-AE SATAII 3G/Sec to CFast

### PCM-23C1CF User scenario



### Ordering Information

- PCM-23U1DG-BE USB Slot w/ Lock for USB Dongle, Half-size mPCIe

### PCM-23U1DG User scenario

