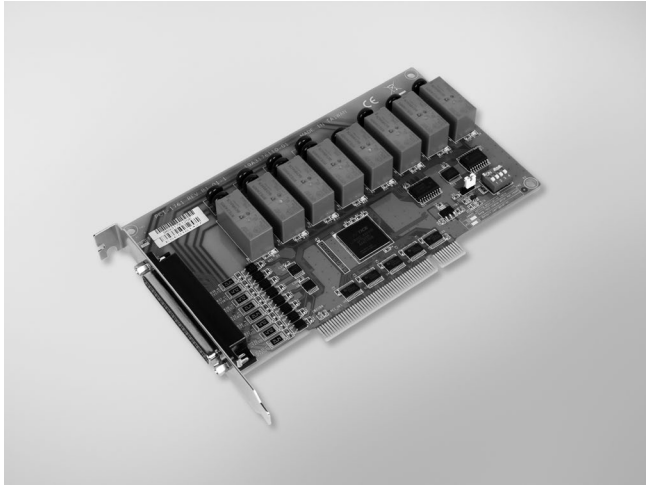


# PCI-1761

## 8-ch Relay and 8-ch Isolated Digital Input PCI Card



RoHS  
COMPLIANT  
2002/95/EC

FCC CE

### Features

- 8 opto-isolated digital input channels
- 8 relay actuator output channels
- LED indicators to show activated relays
- BoardID switch

### Introduction

The PCI-1761 provides 8 opto-isolated digital inputs with isolation protection of 2,500 V<sub>DC</sub> for collecting digital inputs in noisy environments, 8 relay actuators that can be used as a on/off control devices or small power switches.

For easy monitoring, each relay is equipped with one red LED to show its on/off status. Each isolated input supports both dry contact and wet contact so that it can easily interface with other devices when no voltage is present in the external circuit.

### Specifications

#### Isolated Digital Input

- **Channels** 8
- **Input Voltage** Logic 0: 3.0 V max.  
Logic 1: 10 V min. (50 V max.)
- **Interrupt Capable Ch.** 8 (IDIO ~ IDI7)
- **Isolation Protection** 2,500 V<sub>DC</sub>
- **Opto-Isolator Response** 100 μs
- **Input Resistance** 5.7 k Ohm @ 1 W

#### Relay Output

- **Channels** 8
- **Relay Type** 4 x Form C, and 4 x Form A
- **Contact Rating** 2 A @ 250 V<sub>AC</sub>, 2 A @ 30 V<sub>DC</sub>
- **Max. Switching Power** 500 VA, 60 W
- **Max. Switching Voltage** 400 V<sub>AC</sub>, 300 V<sub>DC</sub>
- **Operating Time** Typical: 7 ms, Max: 15 ms
- **Release Time** Typical: 2 ms, Max: 6 ms
- **Resistance** Contact: 100 m Ohm max.
- **Life Expectancy** 2 x 10<sup>8</sup> cycles min. @ 2A/ 250V<sub>AC</sub>

#### General

- **I/O Connectors** 1 x DB37 female connector
- **Dimensions (L x H)** 175 x 100 mm (6.9" x 3.9")
- **Power Consumption** Typical: 5 V @ 220 mA  
Max.: 5 V @ 750 mA
- **Operating Temperature** 0 ~ 60°C (32 ~ 140°F)
- **Storage Temperature** -20 ~ 70°C (-4 ~ 158°F)
- **Storage Humidity** 5 ~ 95 % RH, non-condensing

### Ordering Information

- **PCI-1761** 8-ch Relay and 8-ch Isolated Digital Input PCI Card

#### Accessories

- **PCL-10137-1E** DB37 Cable, 1 m
- **PCL-10137-2E** DB37 Cable, 2 m
- **PCL-10137-3E** DB37 Cable, 3 m
- **ADAM-3937** DB37 DIN-rail Wiring Board