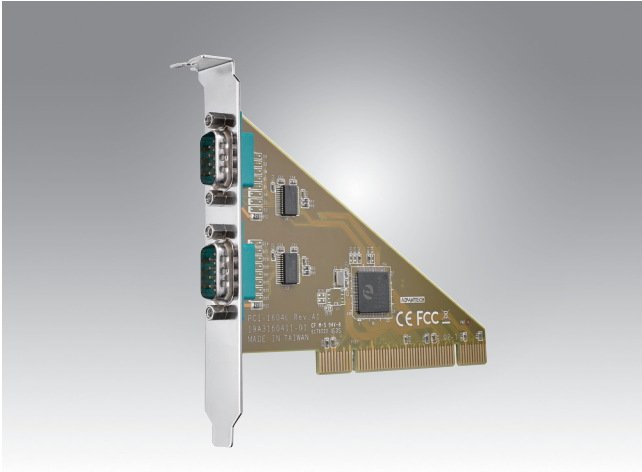


# PCI-1604L

## 2-port RS-232 PCI Communication Card



### Features

- PCI bus 2.2 compliant
- Speeds up to 921.6 kbps for extremely fast data transmission
- Level 4 ESD protection (air 15 KV , contact 8 KV)
- 2 x RS-232 ports
- 128-byte FIFO
- Supported operating systems: Windows XP/7/8/10, and Linux
- Operating Temperature -20 ~ 60°C

### Introduction

The PCI-1604L is an 2-port RS-232 and compatible with the PCI 2.2 bus specification, The card provides 1 KV EFT protection , 8KV ESD protection and have many functions such as high transmission speed of 921.6 kbps; The card can work under a tough environment with -20 ~ 60°C operating temperature. PCI-1604L is an economical communication card for users who need to control several RS-232 devices.

### Specifications

#### General

- **Bus Type** Universal PCI v2.2
- **Certification** CE, FCC class A
- **Connectors** 2 x male DB9
- **Dimensions (L x W)** 119.91 x 83.06 mm (4.72" x 3.27")
- **Power Consumption** 200mA @ +3.3V (typ.)

#### Communications

- **Comm. Controller** PI7C8952
- **Data Bits** 5, 6, 7, 8
- **Data Signals** RS232: TxD, RxD, RTS, CTS, DTR, DSR, DCD, RI
- **FIFO** 128 bytes
- **Flow Control** DTR/DSR, RTS/CTS, Xon/Xoff
- **Parity** None, Odd, Even, Mark, or Space
- **Speed** 50 bps ~ 921.6 kbps
- **Stop Bits** 1, 1.5, 2

#### Protection

- **ESD Protection** 15 KV (air), 8 KV (contact)
- **EFT Protection** 1 KV

#### Software

- **Bundled Software** ICOM Tools
- **OS Support** Windows XP/7/8/10, and Linux.

#### Environment

- **Operating Humidity** 5 ~ 95 % RH, non-condensing
- **Operating Temperature** -20 ~ 60°C (-4 ~ 140°F)
- **Storage Temperature** -25 ~ 85°C (-13 ~ 185°F)

### Ordering Information

- **PCI-1604L-AE** 2-port RS-232 PCI Comm. Card