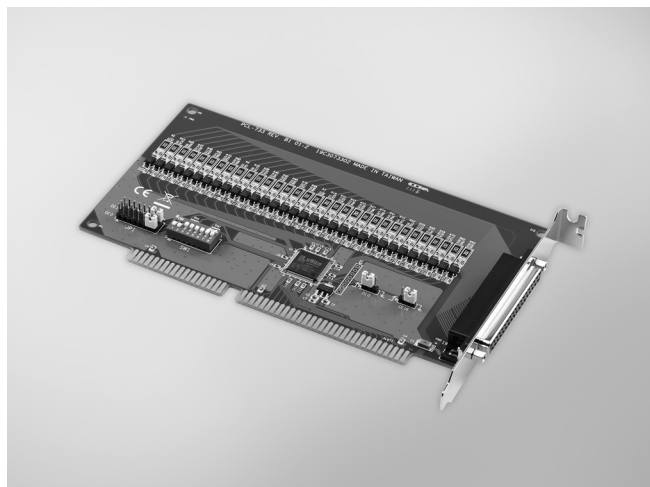


# PCL-733

## 32-ch Isolated Digital Input ISA Card



RoHS  
COMPLIANT  
2002/95/EC

FCC CE

### Features

- 32 isolated, digital input channels
- High-voltage isolation (2,500 V<sub>DC</sub>)
- Interrupt capacity
- D-type connectors for isolated input channels
- Reverse voltage protection for isolated input channels (up to 24 V<sub>DC</sub>)

### Introduction

The PCL-733 card offers 32 isolated digital input channels with isolation protection up to 2,500 V<sub>DC</sub>, which makes them ideal for industrial applications where high-voltage isolation is required.

### Specifications

#### Isolated Digital Input

- **Channels** 32
- **Input Voltage** Logic 0: 1 V max.  
Logic 1: 5 V min., 24 V max.
- **Interrupt Capable Ch.** 2
- **Isolation Protection** 2,500 V<sub>DC</sub>
- **Opto-Isolator Response** 100  $\mu$ s
- **Input Resistance** 3 K $\Omega$  @ 0.2 W

#### General

- **Bus Type** ISA
- **I/O Connectors** 1 x 37-pin D-type female
- **Dimensions (L x H)** 185 x 100 mm (7.3" x 3.9")
- **Power Consumption** Typical: +5 V @ 320 mA  
Max.: +5 V @ 500 mA
- **Operating Temperature** 0 ~ 60° C (32 ~ 140° F)
- **Storage Temperature** -20 ~ 70° C (-4 ~ 158° F)
- **Storage Humidity** 5 ~ 95% RH, non-condensing (refer to IEC 68-2-3)

### Ordering Information

- **PCL-733** 32-channel isolated digital input card, manual and driver CD-ROM (cable not included)
- **PCL-10137-1** DB37 cable, 1m
- **PCL-10137-2** DB37 cable, 2m
- **PCL-10137-3** DB37 cable, 3m
- **ADAM-3937** DB37 wiring terminal for DIN-rail mounting

### Pin Assignments

IDI 0	1	20	IDI 1
IDI 2	2	21	IDI 3
IDI 4	3	22	IDI 5
IDI 6	4	23	IDI 7
EI. GND 1	5	24	IDI 8
IDI 9	6	25	IDI 10
IDI 11	7	26	IDI 12
IDI 13	8	27	IDI 14
IDI 15	9	28	EI. GND 2
IDI 16	10	29	IDI 17
IDI 18	11	30	IDI 19
IDI 20	12	31	IDI 21
IDI 22	13	32	IDI 23
EI. GND 3	14	33	IDI 24
IDI 25	15	34	IDI 26
IDI 27	16	35	IDI 28
IDI 29	17	36	IDI 30
IDI 31	18	37	EI. GND 4
NC	19		