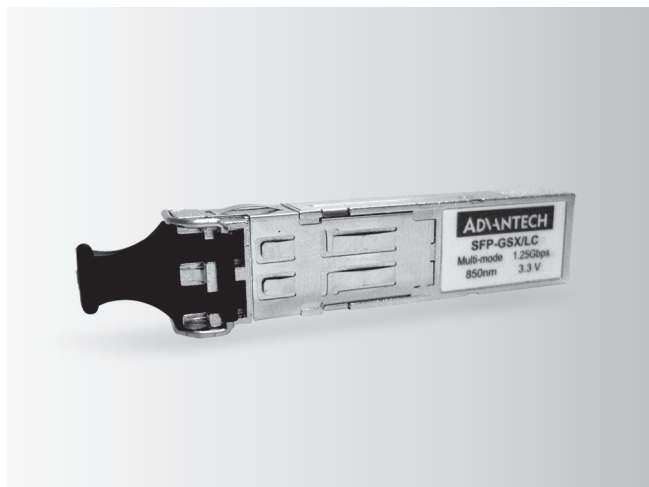


Accessories

SFP Transceiver Modules



Features

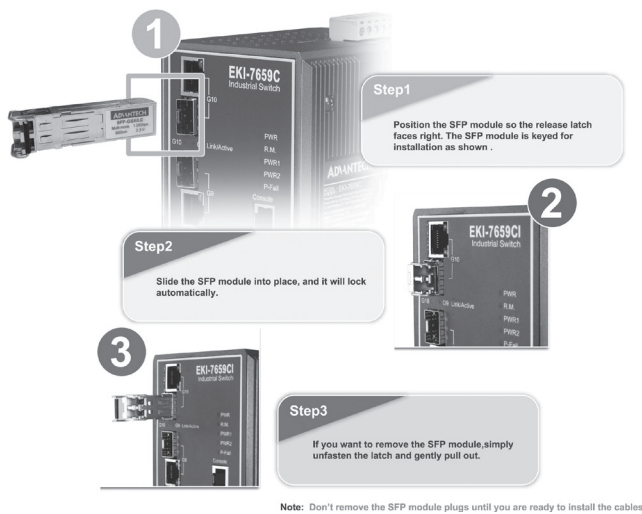
- Industry standard small form pluggable (SFP) package
- Immovable lock design
- Hot pluggable
- Duplex LC connector
- Full duplex speeds support
- TTL signal detect indicator
- 3.3 V_{DC} power supply
- Industry leading EMI performance for high port density
- Class 1 laser product complies with EN 60825-1
- RoHS compliant

Introduction

Advantech's Small Form-factor Pluggable (SFP) transceiver family is available with a variety of different types, allowing users to select the appropriate transceiver for each link to provide the required optical reach over the available optical fiber type. Advantech's SFP transceiver immovable lock design can fix SFP module into the switch firmly. Besides Advantech's SFP transceiver's compact design provides high port density and compliant with Fast Ethernet and IEEE 802.3z Gigabit Ethernet Standards. Advantech's SFP transceivers ensure your networks operate with maximum performance, reliability, and flexibility.

Specifications

Category	Distance	Model Name	Wavelength	TX Power	RX Sens	Voltage	Operating Temp
100Base-FX	M.M. (2km)	SFP-FXM/LC-AE	1310 nm	-14dBm ~ -20dBm	-31dBm (Min)	3.3V	0 to 70° C
	M.M. (2km)	SFP-FXM/LCI-AE					(-40 to 85° F)
	S.M. (30km)	SFP-FXS/LC-30E	1310 nm	-8 dBm ~ -15dBm	-34dBm (Min)	3.3V	0 to 70° C
	S.M. (30km)	SFP-FXS/LCI-30E					(-40 to 85° F)
1000Base	SX (550m)	SFP-GSX/LC-AE	850 nm	-4 dBm ~ -9.5dBm	-18dBm (Min)	3.3V	0 to 70° C
		SFP-GSX/LCI-AE					(-20 to 85° F)
	LX (10 km)	SFP-GLX/LC-10E	1310 nm	-3 dBm ~ -9.5dBm	-20dBm (Min)	3.3V	0 to 70° C
		SFP-GLX/LCI-10E					(-40 to 85° F)
	LX (20 km)	SFP-GLX/LC-20E	1310 nm	-2 dBm ~ -8dBm	-23dBm (Min)	3.3V	0 to 70° C
		SFP-GLX/LCI-20E					(-40 to 85° F)
	LX (40 km)	SFP-GLX/LC-40E	1310 nm	+1 dBm ~ -4dBm	-24dBm (Min)	3.3V	0 to 70° C
		SFP-GLX/LCI-40E					(-40 to 85° F)
	XD (50km)	SFP-GXD/LC-50E	1550 nm	+1 dBm ~ -4dBm	-24dBm (Min)	3.3V	0 to 70° C
		SFP-GXD/LCI-50E					(-40 to 85° F)
	ZX (70km)	SFP-GZX/LC-70E	1550 nm	+5 dBm ~ 0dBm	-24dBm (Min)	3.3V	0 to 70° C
		SFP-GZX/LCI-70E					(-40 to 85° F)
	EZX (110km)	SFP-GZX/LC-110E	1550 nm	+5 dBm ~ 0dBm	-30dBm (Min)	3.3V	0 to 70° C
SFP-GZX/LCI-110E		(-40 to 85° F)					
RJ45 (100m)	SFP-GTX/RJ45-AE				3.3V	0 to 70° C	
WDM (40km)	SFP-GWDM13SC-40E	TX 1310nm / RX 1550nm	+2 dBm ~ -3dBm	-23dBm (Min)	3.3V	0 to 70° C	
WDM (40km)	SFP-GWDM15SC-40E	TX 1550nm / RX 1310nm				0 to 70° C	



Note: Don't remove the SFP module plugs until you are ready to install the cables.

Ordering Information

- **SFP-FXM/LC-AE** 100Base-FX Multi-mode SFP module
- **SFP-FXM/LCI-AE** 100Base-FX Multi-mode SFP module w/Wide temp
- **SFP-FXS/LC-30E** 100Base-FX Single-mode SFP module
- **SFP-FXS/LCI-30E** 100Base-FX Single-mode SFP module w/Wide temp
- **SFP-GSX/LC-AE** 1000Base-SX Multi-mode SFP module
- **SFP-GSX/LCI-AE** 1000Base-SX Multi-mode SFP module w/Wide temp
- **SFP-GLX/LC-10E** 1000Base-LX Single-mode SFP module (10 km)
- **SFP-GLX/LCI-10E** 1000Base-LX Single-mode SFP module (10 km) w/Wide temp
- **SFP-GLX/LC-20E** 1000Base-LX Single-mode SFP module (20 km)
- **SFP-GLX/LCI-20E** 1000Base-LX Single-mode SFP module (20 km) w/Wide temp
- **SFP-GLX/LC-40E** 1000Base-LX Single-mode SFP module (40 km)
- **SFP-GLX/LCI-40E** 1000Base-LX Single-mode SFP module (40 km) w/Wide temp
- **SFP-GXD/LC-50E** 1000Base-XD Single-mode SFP module (50 km)
- **SFP-GXD/LCI-50E** 1000Base-XD Single-mode SFP module (50 km) w/Wide temp
- **SFP-GZX/LC-70E** 1000Base-ZX Single-mode SFP module (70 km)
- **SFP-GZX/LCI-70E** 1000Base-ZX Single-mode SFP module (70 km) w/Wide temp
- **SFP-GZX/LC-110E** 1000Base-EZX Single-mode SFP module (110 km)
- **SFP-GZX/LCI-110E** 1000Base-EZX Single-mode SFP module (110 km) w/Wide temp
- **SFP-GTX/RJ45-AE** 1000Base RJ45 SFP module
- **SFP-GWDM13SC-40E** 1000Base-WDM (Trans:1310nm) SFP module (40 km)
- **SFP-GWDM15SC-40E** 1000Base-WDM (Trans:1550nm) SFP module (40 km)